

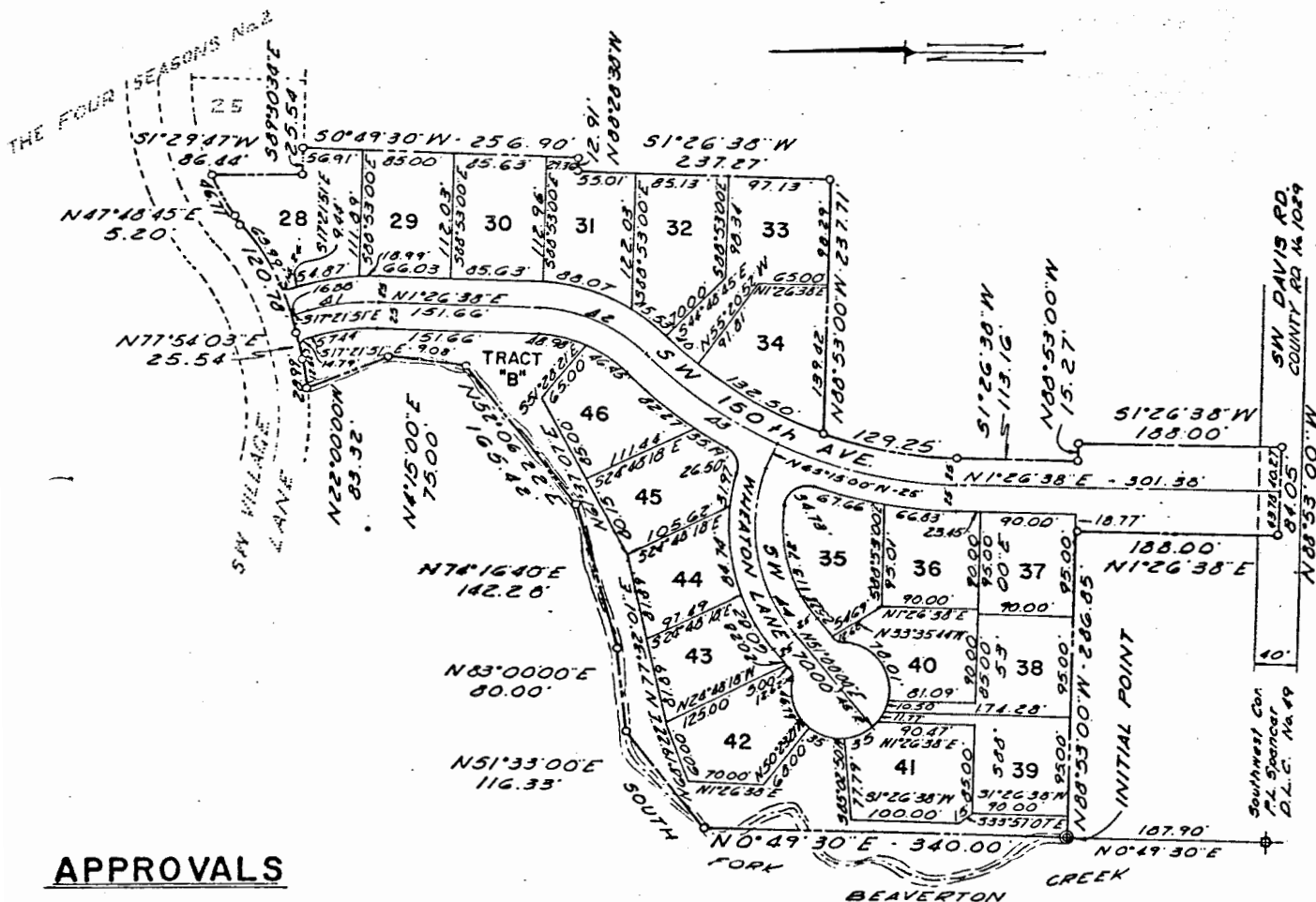
THE FOUR SEASONS No. 3

A PARCEL OF LAND
IN THE P.L. SPENCER D.L.C. No. 49
SECTIONS 17 & 20 T.1S., R.1W., W.M.

WASHINGTON COUNTY, OREGON

DATE: OCTOBER 1968

SCALE: 1"=100'



APPROVALS

this 17 day of FEB, 1969.

ENGINEERING DIVISION, DEPT
PUBLIC WORKS (COUNTY
ENGINEER) WASHINGTON COUNTY.

[Signature] DEPUTY

this 17th day of February, 1969.

DIRECTOR OF REVENUE AND TAXATION
(COUNTY ASSESSOR) WASHINGTON
COUNTY

[Signature] DEPUTY

Approved this 25th day of February, 1969.

BOARD OF COUNTY COMMISSIONER'S
WASHINGTON COUNTY.

[Signature]
[Signature]
[Signature]
[Signature]

Attest: DIRECTOR OF RECORDS AND
ELECTIONS (COUNTY CLERK)
WASHINGTON COUNTY

By [Signature]